



# NEW SPEC HOME

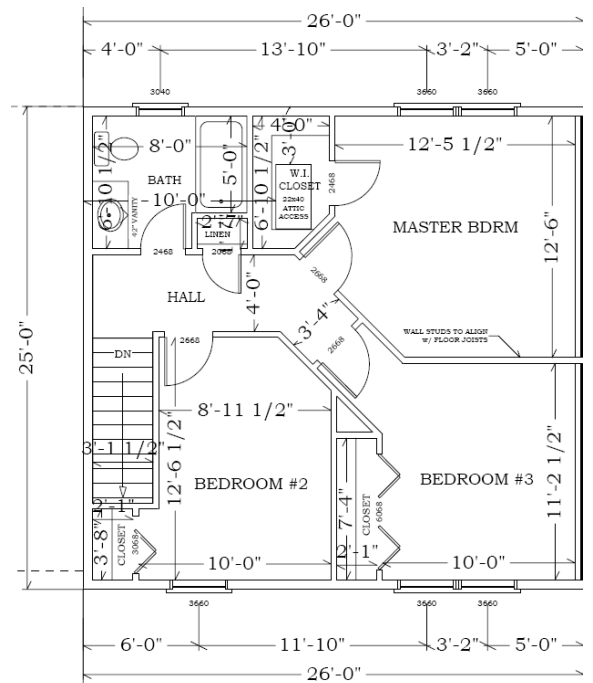
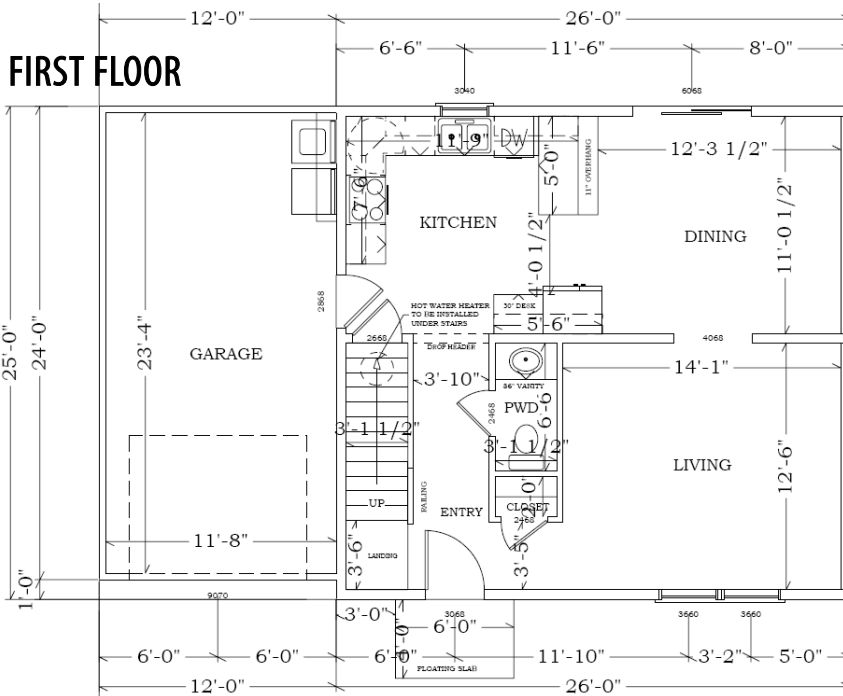
15 - 17 N 23rd St, Lebanon PA

List Price **\$137,500 ea.**  
 MLS # **TBD**

**DIRECTIONS from Lebanon:**  
 Homes are at the corner of  
 Lehman and 23rd Sts.

Property Type **Duplex**  
 Approx Sq. Ft **1,300**  
 Approx Lot Size **0.1 acre**  
 Township / County **West Lebanon / Lebanon**

**LISTED BY : Clyde Patches, Realtor®**  
 Brownstone Real Estate  
 1510 Cornwall Road  
 Lebanon, PA 17042  
 Office 717.279.6222  
 Cell 717.821.5093  
 cpatches@brwnstone.com



[www.trivalleycontractors.com](http://www.trivalleycontractors.com)

Home of **E**design Pricing & Customization Tool



1501 E Cumberland St, Lebanon PA 17042 717.277.7674

This sheet is for illustrative purposes only and is not part of a legal contract. Plans are subject to modification as necessary to meet building codes, and to facilitate mechanical installation. The architectural design, drawings, and contents of this page are the sole property of Tri-Valley Contractors Inc. and is protected under copyright law. Reproduction in any form without express written consent is strictly prohibited. © 2008 Tri-Valley Contractors

# SITE PLAN WEST LEBANON DUPLEX SCALE - 1"=20'

